

Official Golf Touring PENINSULA MORNINGTON

MORNINGTON PENINSULA GOLF TRAIL

AUSTRALIA'S #1 GOLF DESTINATION

HOW IT WORKS

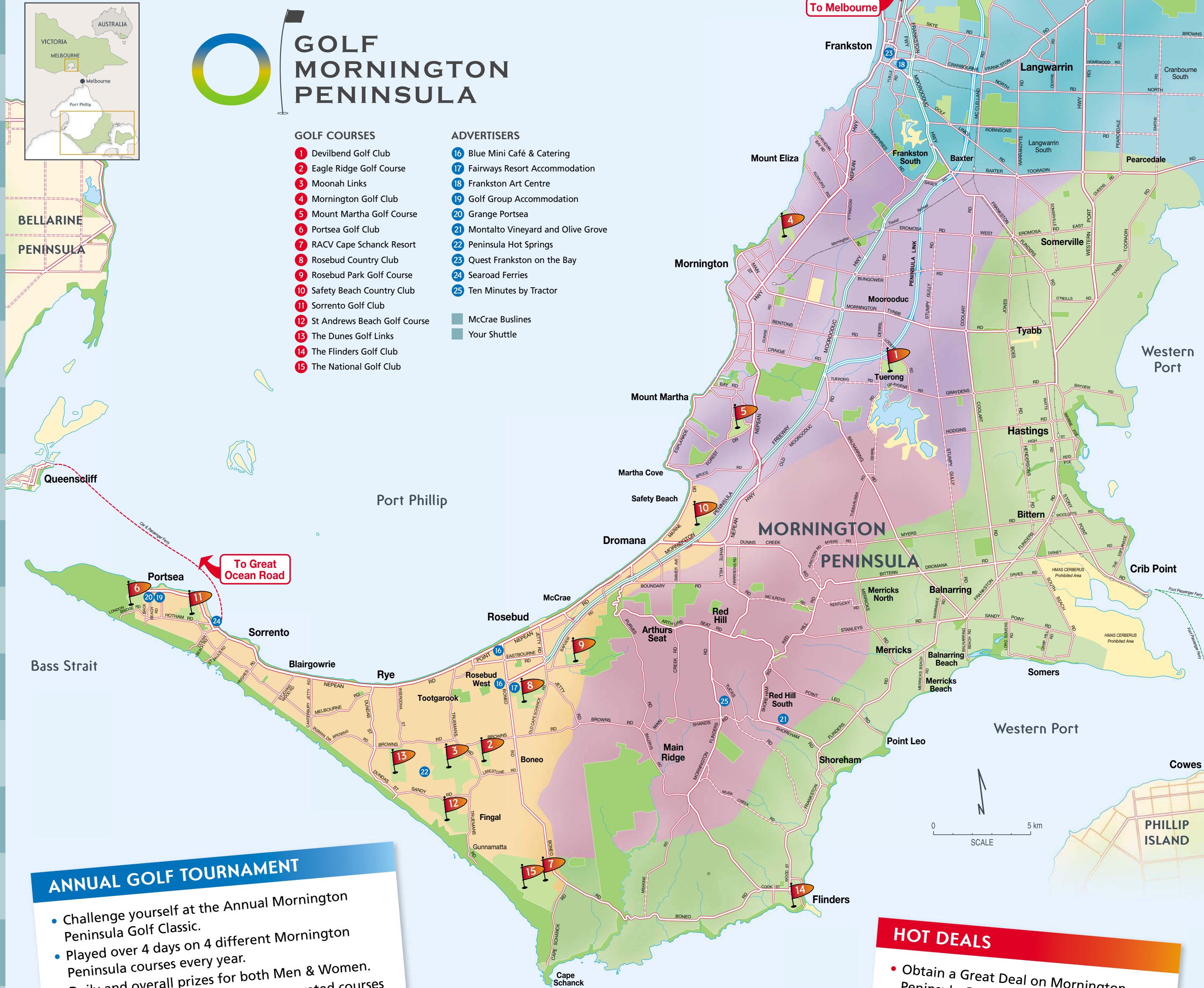
- Obtain your copy of the Golf Trail Map. There are 14 Mornington Peninsula golf clubs participating in the Trail (look for the 'Trail Stamp Here' box in the bottom right hand corner of each course description).
- Play any of the participating Mornington Peninsula courses (you only need to play one course at each location) and at the completion of your game request the Pro Shop to stamp your Trail Map where the course details are shown and again on the 'Rewards Registration' cut off section.
- After seven different stamps collected you can claim your first reward by cutting off the completed 'Rewards Registration' section, fill out your Name, Address, Phone and Email and post to: MPGT, PO Box 111, Rosebud VIC 3939
- Please ensure email is legible to enable us to contact you to arrange reward.
- After you have completed the remaining seven courses you can claim the final reward and have boasting rights amongst all your golf buddies.

REWARDS

- After seven courses** – Golf Mornington Peninsula Golf Shirt and Cap – Retail Value \$60.
- After 14 courses** – Framed photo of all participating courses – retail value \$200.
- Allow three to five weeks for your reward to be received.

TERMS & CONDITIONS

Qualification:
– You need to play seven different courses in 18 months from date of first round.
– You need to have completed all 14 different courses within 36 months from date of first round.
Rewards must be claimed within four months of last round.
The operation of the MPGT Golf Trail, including rewards provided, dispute resolution etc. will be at the sole discretion of the MPGT Executive Committee and no correspondence will be entered into.



ANNUAL GOLF TOURNAMENT

- Challenge yourself at the Annual Mornington Peninsula Golf Classic.
- Played over 4 days on 4 different Mornington Peninsula courses every year.
- Daily and overall prizes for both Men & Women.
- Players enjoy some of Australia's top rated courses and socialise at various optional functions with other fun loving golfers.
- Full Details:
www.golfmorningtonpeninsula.com.au
**Mornington Peninsula
– Australia's #1 Golf Destination**

HOT DEALS

- Obtain a Great Deal on Mornington Peninsula Golf courses.
- Great Savings at most courses for groups of 4 players including carts.
- Full Details: Look for **HOT DEALS** at www.golfmorningtonpeninsula.com.au
**Mornington Peninsula
– Australia's #1 Golf Destination**

www.golfmorningtonpeninsula.com.au

BLUE MINI CAFÉ & CATERING

- All day Breakfast and Lunch 7 days
- Private dining and function specialists
- Foreshore location, bay view back drop
- Mod Oz food, Fully Licensed
- Café-Lounge Bar-Food to Go-Functions

Blue Mini Café & Catering
1455 Point Nepean Road, Rosebud
T: 03 5982 1455
Melways Reference: 170 A1
Blue Mini Café
Eatery-Emporium-Events
Cnr Boneo and
2 Colechester Rds, Rosebud
info@bluemini.com.au
www.bluemini.com.au



FRANKSTON ART CENTRE

After a fabulous day on the greens, put a smile on your friends' faces with a night that's bound to be a hit. With something for everyone from comedy to music, dance to drama you are sure to have a winning night at the FAC.
Enjoy: direct access parking, a fully stocked bar and pre-show dining at selected performances.
There's always something happening at the FAC – theatre; exhibitions; workshops; functions.



27-37 Davey Street
Frankston 3199
Melways Reference: 100A D8
T: 03 9784 1060
thefac@frankston.vic.gov.au
www.thefac.com.au

GRANGE PORTSEA

Located in the heart of Portsea Village, Grange Portsea is made up of 23 contemporary 1, 2 and 3 bedroom apartments. Light and airy, each apartment is appointed with spacious open living area with own private balcony, fully equipped kitchen and meals area.
With close proximity to some of the Peninsula's best golf courses, Grange Portsea makes the perfect accommodation choice for golf groups. With a variety of golf packages starting from just \$195 per person (include accommodation, meal voucher and a game of golf), you'll surely find something to suit your group.



3765 Point Nepean Road
Portsea 3944
Melways Reference: 156 E2
T: 03 5984 8484
portseavillage@grangecc.com.au
www.grangecc.com.au

MONTALTO VINEYARD & OLIVE GROVE

Montalto rewards all visitors with an experience to remember, offering a journey through vineyards, olive grove, restaurant, kitchen gardens and orchards, sculpture walk and wetlands. An easy drive from the Mornington Peninsula's best golf courses, Montalto offers a range of dining options, including a Chef's Hat restaurant and award winning wines at the Cellar Door. This unique offering has seen Montalto awarded the Gourmet Traveller Award for Best Winery Tourism Destination, and is the perfect way to round out your golf day on the Peninsula. Montalto is open every day.



33 Shoreham Rd
Red Hill South 3937
Melways Reference: 256 B2
T: 03 5989 8412
info@montalto.com.au
www.montalto.com.au

QUEST FRANKSTON ON THE BAY

Quest Frankston on the Bay is a modern and stylish accommodation property located in the heart of Frankston and central to some of Australia's best golf courses on the Mornington Peninsula. Quest Frankston on the Bay features 82 brand new, New York style luxury apartments with modern features. Short walk to beach and famous onsite restaurants. This premier accommodation property is a great place to relax and unwind. Contact us for special Mornington Peninsula Golf Packages.



435-437 Nepean Highway
Frankston 3199
Melways Reference: 102 C2
T: 03 8765 2500
questfotb@queststudios.com.au
www.questfrankstononthebay.com.au

TEN MINUTES BY TRACTOR

Stunning wines – wonderful food – unforgettable name.
Three vineyards, ten minutes by tractor apart, produce outstanding cool climate wines including single vineyard and cellar door only releases.
The cellar door is open daily from 11am to 5pm.
Our restaurant is open Wed-Sun for lunch, Thu-Sat for dinner and daily in January.



1333 Mornington-Flinders Road,
Main Ridge 3928
Melways Reference: 190 E11
T: 03 5989 6080
info@tenminutesbytractor.com.au
www.tenminutesbytractor.com.au

FAIRWAYS RESORT ACCOMMODATION

Located on the Rosebud Country Club's 36 hole golf course, Fairways offers 4-star rated accommodation with all rooms located within 100 metres of the Clubhouse and first Tee.
Guests are entitled to favourable green fees as well as dining discounts at the View Restaurant. Fairways is managed by local golfers and our expertise ensures your Stay and Play package is tailored to your golfing preferences and budget.



207 Boneo Road
Rosebud 3939
Melways Reference: 170 C7
T: 03 5950 2111
frontdesk@fairwaysresort.com.au
www.fairwaysresort.com.au

GOLF GROUP ACCOMMODATION

The Portsea Beach Retreat in the heart of the Portsea Township, sleeps 20+ with a spacious living area, BBQ, deck and six rooms.
The Bayplay Group Lodge in Blairgowrie sleeps up to 30 with 10 bedrooms, open plan dining plus a large BBQ area and pool.
Book with Bayplay for your Golf Group Getaway.
Tailored Packages available.



Office: 3755 Point Nepean Road
Portsea 3944
Melways Reference: 156 F2
T: 03 5984 0888
bookings@bayplay.com.au
www.bayplay.com.au

McCRAE BUSLINES

Golf Group Transport Specialists – McCrae Buslines is a local transportation company owned and operated by Laurie and Lorraine Williams with 40 years experience of living on the Mornington Peninsula. We can organise your transport requirements for day and long term charter, to and from Mornington Peninsula and daily transport from your accommodation to golf courses.
Our fleet consists of 33, 21 and 16 seat coaches and two covered in trailers catering for groups of maximum of 30 golfers.



T: 03 5986 2471
Laurie: 0427 301 868
Lorraine: 0414 301 868
mccraebuslines@bigpond.com
www.mccraebuslines.com.au

PENINSULA HOT SPRINGS

Victoria's only thermal mineral springs and day spa centre. Enjoy over 20 bathing experiences in our Bath House including a Turkish steam bath (Hamam), cave pool, underground sauna, and Hilltop pool with 360 degree views. Relax in our Spa Dreaming Centre, indulge in a spa treatment, unwind in our tranquil thermal mineral pools or enjoy one of our private pools and baths.
Two cafés are open for breakfast and lunch daily and dinner Tuesday, Friday and Saturday.
Open daily from 7.30am to 10.00pm.



140 Springs Lane, Fingal 3939
Melways Reference: 169 A11
T: 03 5950 8777
relax@peninsulahotsprings.com
www.peninsulahotsprings.com

SEAROAD FERRIES

Searoad Ferries, Australia's favourite car and passenger ferry is a great way to get to and from the Mornington Peninsula. Experience Melbourne's Port Phillip Bay on the 40 minute crossing between Sorrento and Queenscliff. See spectacular coastline, dolphins, whales in winter and enormous ships – as you breathe incredibly fresh air. Relax and enjoy easy drive on/drive off facilities, comfortable viewing lounges, a tempting café and WiFi. Ferries depart daily, every hour on the hour from 7am to 6pm.



Sorrento Pier & Queenscliff Harbour
Melways Reference: 157 C5 & 499 J10
T: 03 5258 3244
travel@searoad.com.au
www.searoad.com.au

YOUR SHUTTLE

When no one wants to drive call Your Shuttle. Whether it's as simple as an accommodation to dinner transfer or a comprehensive service for your entire stay, your dedicated vehicle and our local knowledgeable drivers are at your service. Purpose built for golfers, our luxury 10 seater offers extra head and leg room with upright storage for eight golf bags.
Call us now to explore the myriad of options.
Note: Larger vehicles also available.



T: 1300 798 488
shuttle@yourshuttle.com.au
www.yourshuttle.com.au

REWARDS REGISTRATION – SHEET ONE

TRAIL STAMP HERE	TRAIL STAMP HERE	TRAIL STAMP HERE	TRAIL STAMP HERE
---------------------	---------------------	---------------------	---------------------

TRAIL STAMP HERE	TRAIL STAMP HERE	TRAIL STAMP HERE
---------------------	---------------------	---------------------

Name: _____

Address: _____

Phone: _____

Email: _____

When completed with 7 different stamps, detach and return to:
MPGT, PO Box 111, Rosebud VIC 3939

REWARDS REGISTRATION – SHEET TWO

TRAIL STAMP HERE	TRAIL STAMP HERE	TRAIL STAMP HERE	TRAIL STAMP HERE
---------------------	---------------------	---------------------	---------------------

TRAIL STAMP HERE	TRAIL STAMP HERE	TRAIL STAMP HERE
---------------------	---------------------	---------------------

Name: _____

Address: _____

Phone: _____

Email: _____

When completed with 7 different stamps, detach and return to:
MPGT, PO Box 111, Rosebud VIC 3939

PREMIER PARTNER



ASSOCIATE MEMBERS

Aquabelle Apartments	1300 880 319
Beach Retreats	0419 301 928
Blue Mini Café	03 5982 1455
Dromana Hotel	03 5987 1922
R.T. Edgar Real Estate Pty Ltd	03 5985 9988
Fairways Resort	03 5950 2111
Golf Select	03 9563 6776
Golf Tourism Australia	03 9018 9038
Grange Portsea Village	1800 803 377
Great Golf Getaways	0414 418 415
Hotel Sorrento	03 5984 8000
McCrae Buslines	03 5986 2471
Moonah Links Golf Academy	03 5988 2047
Mt Martha B&B By the Sea	0417 238 311
One Four Nelson Rye Hotel	03 5985 7222
Peninsula Hot Springs	03 5950 8777



AUSTRALIA'S #1 GOLF DESTINATION

The Mornington Peninsula is quickly gaining national and global recognition as a golf destination the equal of anywhere in the world.

A bold statement perhaps, but golf enthusiasts keen to experience the best are discovering that the combination of courses, their accessibility, their variety and the sheer number of them (19), provides a package that is hard to resist.

With sand-hills and the coastal hinterland providing the perfect natural conditions for golf courses, world famous architects have delighted in the opportunity to work with mother nature to create wonderful examples of links, resort and traditional courses.

The Mornington Peninsula is blessed with courses that both challenge and excite, courses that provide the most exhilarating views over Port Phillip, Western Port and Bass Strait, courses with turf quality that rivals that of the famed Melbourne sand belt and courses where the sign 'Visitors Welcome' is right at the top of the list.

You simply cannot play golf in any other area in Australia that has everything the Mornington Peninsula has to offer: world class wineries, fine dining and accommodation, spas and wellness centres, boating, fishing, national parks, and bay and surf coast beaches.

www.golfmorningtonpeninsula.com.au
info@golfmorningtonpeninsula.com.au



ROSEBUD COUNTRY CLUB



Rosebud Country Club holds a special place on the Mornington Peninsula. Not only is it one of the most vibrant clubs in the region, but it's arguably one of Victoria's best golfing facilities.

Rosebud Country Club boasts 36 holes of golf, a modern clubhouse that caters for over 200 people, restaurant, function areas and bowls.

The adjoining Fairways Resort offers superb 4-star accommodation. Rosebud Country Club is just 45 minutes from Melbourne's eastern suburbs. There are membership options to suit everyone with a special category for golfers that live more than 60km from the club.

Our golf shop stocks an impressive range of men's and women's apparel along with all your essential golfing supplies. Resident professional Matt Bolton has earned a reputation for his coaching expertise and is available for individual and group lessons.

The newly-designed practice range includes a chipping area, practice bunker and a synthetic grass area for play during the winter months. Both courses at Rosebud Country Club are impeccably maintained and can be enjoyed all year round given our sand-based location. Rosebud Country Club is the 'must play' course for those visiting the Mornington Peninsula.

207 Boneo Road, Rosebud 3939
Melways Reference: 170 C7
T: 03 5950 0888
info@rosebudcountryclub.com.au
www.rosebudcountryclub.com.au



Course No.	Holes	Course Length (m)	Course Par
36	5975 & 6160	71 & 72	



TRAIL STAMP
HERE

DEVILBEND GOLF CLUB



Established in 1973 and located in the 'Heart of the Peninsula', the Devilbend course provides a great day's golf on a course that has couch fairways, automatic watering and excellent greens. It is a challenging 18 hole, 5998m course set amidst a flora and fauna reserve. Over the past ten years the capital works program has been implemented with the result that the course has improved in all areas. Each hole provides magnificent views of undulating countryside and provides a variety of challenges for all golfers.

The club and its players are widely respected in district and state competitions. Facilities include a driving range, practice nets and a large practice putting area. The clubhouse is renowned for its friendly atmosphere. The golf shop is equipped for all your needs, and lessons can be arranged with the professional staff.

Bookings are required and dress standards apply.

Loders Road, Moorooduc 3933
Melways Reference: 152 K1
T: 03 5978 8470
info@devilbendgolf.com.au
www.devilbendgolf.com.au



Course No.	Holes	Course Length (m)	Course Par
18	5998	71	



TRAIL STAMP
HERE

EAGLE RIDGE GOLF COURSE



A standout course on the golfing paradise of the Mornington Peninsula, Eagle Ridge presents a fair challenge and superb facilities for green-fee players, members, social groups and corporate guests.

"The beauty is almost Augusta like. That may sound trite, cliched, for nowhere compares with the course that hosts the Masters. But if we use 'Augusta' as an adjective to create an image of trees and flower beds, ornamental waterfalls and ponds, golden bunkers, lush fairways and true, quick greens, then its use is apt". *Andy Withers, Fox Sports 2009*

Recognised by Golf Australia as one of the top 60 best public access golf courses in Australia in 2013, Eagle Ridge delivers on its promise of a 'great day out' for all who pass through their gates. With unmatched par-3s and two distinct nines, the course delivers a fair test for all handicaps and rewards every golfer with a cold beer after the game in the beautiful Clubhouse whilst watching all the action on the course. A relaxed atmosphere and friendly staff will ensure you will want to book your next game sooner rather than later!

Bookings can be made online (often with discounts attached) and a growing number of Eagle Ridge fans are signing up to receive terrific offers over the year via the website or Facebook page.

Browns Road, The Cups 3941
Melways Reference: 169 G12
T: 03 5988 6341
info@eagleridge.net.au
www.eagleridge.com.au



Course No.	Holes	Course Length (m)	Course Par
18	6123	72	



TRAIL STAMP
HERE

MOONAH LINKS



Moonah Links is without doubt the premier golf resort on the Mornington Peninsula. Having hosted five major internationally telecast golf tournaments, including the 2003 and 2005 Australian Open, Moonah Links' Open Course was voted Number One 'Best Conditioned Golf Course in Australia' in 2008, 2009, 2010, 2011 and 2012. Moonah Links' Legends Course was voted Number Two 'Best Conditioned Golf Course in Australia' in 2008, 2009, 2010, 2011 and 2012.

Superior course conditions ensure year round playability on these two world-class championship courses designed by Peter Thomson – five times British Open Champion – and Thomson Perrett. Catering to players of all ages and abilities, the Resort also offers practice facilities designed to Australian Institute of Sport specifications which include a 250m driving range, practice putting greens and short game area.

Boasting the largest fleet of golf carts in Victoria, a comprehensive Pro Shop stocked with the latest hardware and apparel, 96 luxuriously appointed guest rooms, extensive conference, banquet and dining facilities and a teaching facility regarded as one of the foremost elite golf training venues in Australia, Moonah Links Resort is arguably one of the most comprehensive golf resorts in Victoria.

Peter Thomson Drive, Fingal 3939
Melways Reference: 252 E1
T: 03 5988 2047
manager@moonahlinks.com.au
www.moonahlinks.com.au



Course No.	Holes	Course Length (m)	Course Par
36	6829 & 6315	72	



TRAIL STAMP
HERE

MORNINGTON GOLF CLUB



Situated on the rim of Port Phillip Bay, Mornington Golf Club is the only golf club on the Mornington Peninsula to offer a course situated on the cliffs that boasts such outstanding views.

Fairways are lush Santa Anna couch grass with greens fast with subtle breaks. A semi private golf club, visitors are most welcome to take in the hospitality of a club that's been in existence for over one hundred years.

Socially, the club runs a highly successful bistro, Wednesday to Sunday, lunch and dinner and accommodates 120 guests in both function rooms.

Whether you are playing on the outstanding course, enjoying a drink or fantastic food in the clubhouse, you will find Mornington Golf Club as the club that has it all.

Tallis Drive, Mornington 3931
Melways Reference: 104 J8
T: 03 5975 2784
proshop@morningtongolf.com.au
www.morningtongolf.com.au



Course No.	Holes	Course Length (m)	Course Par
18	6005	72	



TRAIL STAMP
HERE

MOUNT MARTHA GOLF COURSE



The Mount Martha Public Golf Course offers spectacular views across Port Phillip Bay and caters for all golfers ranging from social through to the serious players. The Santa Anna couch grass fairways and bent grass greens provide a quality playing surface all year round. With over 40 new bunkers and a water hazard, this is sure to keep all golfers on their toes. The remodelled practice range facility allows golfers to hone their skills before the game. Should you require further assistance our PGA Professional can offer Golf Lessons, Clinics, Equipment repairs and gift vouchers.

Want to enjoy a pre or post game drink? Well do so in our fully licensed Bar and Balcony area. Have a drink with something to eat from our extensive kiosk range, while overlooking the bay views.

Golf Clubs, buggies and motorised carts are all available for hire. Bookings are essential for tee times and hire gear. Families and beginners are always welcome and well catered for with the affordable green fees. Twilight golf is available all year round. All enquiries can be made through our fully stocked pro shop.

Forest Drive, Mount Martha 3934
Melways Reference: 151 A6
T: 03 5974 2266
proshop@mornpen.vic.gov.au
www.mornpen.vic.gov.au



Course No.	Holes	Course Length (m)	Course Par
18	5151	70	



TRAIL STAMP
HERE

PORTSEA GOLF CLUB



This links style layout is set amongst rolling sand dunes adjoining Point Nepean National Park. Portsea ranks as one of the top courses on the Peninsula and consistently rates in the Top 50 Courses of Australia. A number of design improvements to bunkering, tees and greens have further enhanced the course in recent years. With superbly maintained couch fairways and well drained soils, Portsea is an enjoyable if not challenging experience all year round.

Portsea hosts state and national events, complemented by their own prestigious 72 hole Open Amateur and the iconic Portsea Pro-Am. The Pro-Am on 2 January each year attracts a quality field of professionals, amateurs and celebrities who entertain a huge crowd of golfers, families and holiday makers. Portsea welcomes visitors Sunday to Friday and our fully licensed clubhouse is open seven days offering a range of dining options.

"Portsea stimulates me. It is in every way a champion's course."
Peter Thomson

46 London Bridge Road, Portsea 3944
Melways Reference: 156 D2
T: 03 5981 6100
pro@portseagolf.com.au
www.portseagolf.com.au



Course No.	Holes	Course Length (m)	Course Par
18	5747	71	



TRAIL STAMP
HERE

RACV CAPE SCHANCK RESORT



Located on Victoria's spectacular Mornington Peninsula, RACV Cape Schanck Resort is set on a magnificent 18 hole golf course, hedged by National Park and overlooks the Southern Ocean. The 18 hole, par 70 championship golf course boasts spectacular views over Bass Strait and Port Phillip Bay. Consistently rated among Australia's best 100 courses and designed by renowned architect Robert Trent Jones Jr, the course features huge greens, large open bunkers and wide tree lined fairways for an enjoyable, yet challenging round of golf. RACV Cape Schanck Resort offers a fully serviced golf shop and driving range plus superb onsite restaurant, bar, lounge areas and conferencing facilities.

Great value stay and play packages are available, with overnight accommodation in superb ocean view rooms. RACV members enjoy the added benefit of special member tariffs on golf and accommodation, all year round.

Trent Jones Drive (via Boneo Road)
Cape Schanck 3939
Melways Reference: 259 D3
T: 03 5950 8100
capeschanck@racv.com.au
www.racv.com.au



Course No.	Holes	Course Length (m)	Course Par
18	5674	70	



TRAIL STAMP
HERE



ROSEBUD PARK GOLF COURSE



"Where the View is Worth the Drive"
Located on the slopes of Arthur's Seat this 18 hole course provides panoramic views of Port Phillip Bay stretching from the City skyline to the Heads. The Southern Peninsula and Bass Strait can also be viewed from many locations throughout the Course.

Rosebud Park is ideal for golfers of all standards with many challenging but forging holes ensuring maximum enjoyment by all players. The lush Santa Anna Couch fairways are well maintained all year round due to a plentiful supply of recycled water. The bent/poa greens are fast, true and in many cases protected by strategic bunkering. Practice facilities include, Chipping and Pitching Areas, Bunkers, Nets and a large Putting green. The large, well treed Picnic area with free, modern gas BBQs is very popular with families and social groups. There are several large, well equipped shelters (open and enclosed) providing a relaxing environment where you can enjoy your own food and drinks. A great facility for social groups to hold Presentations and to raise funds.

Providing great value for money, with competitive green fees, the course has a well equipped Pro Shop where clubs, carts and buggies are all available for hire. Beginners and Family groups are welcome and tuition is available from PGA Professionals. A relaxed dress code applies creating an informal atmosphere for everyone to enjoy.

Elizabeth Drive, Rosebud 3939
Melways Reference: 170 K5
T: 03 5981 2833
rosebudpark@bigpond.com
www.rosebudpark.com.au



Course No.	Holes	Course Length (m)	Course Par
18	5268	70	



TRAIL STAMP
HERE

SAFETY BEACH COUNTRY CLUB



Peninsula Link brings the club in easy and quick reach from Melbourne and suburbs, and the course stands out as you drive the Mornington Freeway due to the hundreds of mature palm trees adorning the course. Casual and dedicated golfers alike get that friendly attention that is a hallmark of this club, and being relatively flat, it's also friendly on the legs. Don't let the Par fool you. This course has many challenges that will cause you to think carefully about your club selection. The lush green fairways and well maintained greens, amongst the best on the Peninsula, offer all levels of golfer a round that will inspire them to return to 'beat the course'.

After the game enjoy a convivial drink in the clubhouse. The Country Club also has three tennis courts and it is situated less than a kilometre from the pristine sands of Safety Beach, spectacular Martha Cove and the delights of the local wineries. Try our 'Mad Monday' golf special for budget golf and carts. The course is ideally suited for family, group and corporate day outings with golf, tennis and the function centre. Accommodation is available nearby in Safety Beach and Dromana. Light meals are available in the clubhouse, family dining is also available in the adjoining Café / Bar / Function Centre.

10 Country Club Drive, Safety Beach 3936
Melways Reference: 160 E3
T: 03 5981 0100
baygolf@pen.hotkey.net.au
www.safetybeachcountryclub.com.au



Course No.	Holes	Course Length (m)	Course Par
18	4872	67	



TRAIL STAMP
HERE

SORRENTO GOLF CLUB



You're Welcome at Sorrento Golf Club

A club that enjoys a special reputation within Victoria as one of the premier courses and only 80 minutes from Melbourne. The course is beautifully presented with groomed greens and couch fairways always providing plenty of challenge for golfers of all standards.

The summer holiday season is very busy on the Mornington Peninsula and especially at Sorrento, however at other times guests will find that there is plenty of opportunity to reserve a time for a mid week or Sunday afternoon round.

Our Professional Shop has everything a golfer could need: tuition, hire clubs, clothing and equipment. A number of motorised golf carts are available to make 18 holes a little less demanding. There are wonderful clubhouse facilities complemented by excellent dining, friendly service and a warm welcome.

An ideal location to mix a little business with a lot of pleasure.

Well worth a visit.

Langford Road, Sorrento 3943
Melways Reference: 156 K5
T: 03 5984 2626
club@sorrentogolf.com.au
www.sorrentogolf.com.au



Course No.	Holes	Course Length (m)	Course Par
18	5653	70	



TRAIL STAMP
HERE

ST ANDREWS BEACH GOLF COURSE



Located in the famous 'Cups' region of the Mornington Peninsula and metres from the thundering surf of Gunnamatta Beach, St Andrews Beach Golf Course has firmly entrenched itself as one of Australia's finest and most picturesque golf courses.

Built on a stunning piece of land and designed by internationally renowned golf course architect Tom Doak (Barnbougle Dunes, Cape Kidnappers), this classic 18 hole links style course offers many challenges to the serious golfer whilst still being thoroughly enjoyable for the social player.

Open to the public seven days a week and recently rated number three in Australia's Best Public Access Courses by Golf Australia Magazine, St Andrews Beach has a fully licensed rustic clubhouse with large alfresco deck providing visitors with a relaxing place to unwind and relive the highlights of a truly memorable experience.

Open dawn to dusk every day of the year except Christmas Day.

209 Sandy Road, St Andrews Beach 3941
Melways Reference: 252 C6
T: 03 5988 6000
bookings@standrewsbeachgolf.com.au
www.standrewsbeachgolf.com.au



Course No.	Holes	Course Length (m)	Course Par
18	6070	70	



TRAIL STAMP
HERE

THE DUNES GOLF LINKS



'Links Golf is Real Golf – The Dunes is Real Golf'

Australia's Premier Public Access Course: Regularly ranked as Number One by all golf course guides, The Dunes has also been ranked among Australia's Top 20 courses.

The Dunes is one of the few true links courses in Australia and has 27 holes, all set in 300 acres of gently rolling sand dunes.

The tournament course (6459 metres) achieves the very difficult objective of being a serious challenge for the low handicapper but also fun for the higher handicapped golfer.

Public access yes, but the highest standards of course maintenance are matched by only a few private clubs.

The course is the home of The Dunes Medal, Australia's premier 72 hole stroke tournament for elite amateurs.

335 Browns Road, Rye 3941
Melways Reference: 168 G11
T: 03 5985 1334
golf@thedunes.com.au
www.thedunes.com.au



Course No.	Holes	Course Length (m)	Course Par
27	6459 & 2316	72 & 33	



TRAIL STAMP
HERE

THE FLINDERS GOLF CLUB



Founded over 100 years ago, the Flinders Golf Club remains one of the most scenic and accessible golf courses on the Mornington Peninsula. Built along a stunning stretch of cliff-top land overlooking Bass Strait and Western Port Bays, The Flinders Golf Club welcomes members and visitors seven days with the Pro Shop open from dawn 'til dusk.

Flinders is perhaps best described by Peter Thomson AO CBE, "Flinders is in a fine family of golf, a distant cousin of Pebble Beach and a relative of Muirfield, that is always best played in wind on salt sprayed turf with a view of the blue sea." Competitive Green Fees and stunning Clubhouse views help make Flinders a great option for golfers of all standards.

With tight fairways and demanding approaches to greens, this well manicured course provides a true test of traditional shotmaking and course management skills.

Bass Street, Flinders 3929
Melways Reference: 262 A9
T: 03 5989 0583
manager@flindersgolfclub.com.au
www.flindersgolfclub.com.au



Course No.	Holes	Course Length (m)	Course Par
18	5259	69	



TRAIL STAMP
HERE

THE NATIONAL GOLF CLUB



The National Golf Club at Cape Schanck is one of Australia's leading golfing facilities.

The Moonah (Greg Norman), Old (Robert Trent Jones Jr.) and Ocean (Thomson, Wolveridge and Perrett) are three magnificently designed, world-class, 18 hole championship courses currently ranked 8, 12 and 37 respectively, in Australia.

The state-of-the-art Clubhouse is surrounded by stunning wild vegetation with magnificent views of Bass Strait. It overlooks the Moonah and Ocean courses built on rolling sand dunes in classic 'links land'.

Although a private Club, there are opportunities to access the premium courses and excellent facilities of The National.

The Cups Drive, Cape Schanck 3939
Melways Reference: 259 A5
T: 03 5988 6666
info@nationalgolf.com.au
www.nationalgolf.com.au



Course No.	Holes	Course Length (m)	Course Par
54	6313, 6576 & 6539	72	